



SGR xx1 – PCB mounting socket and accessories

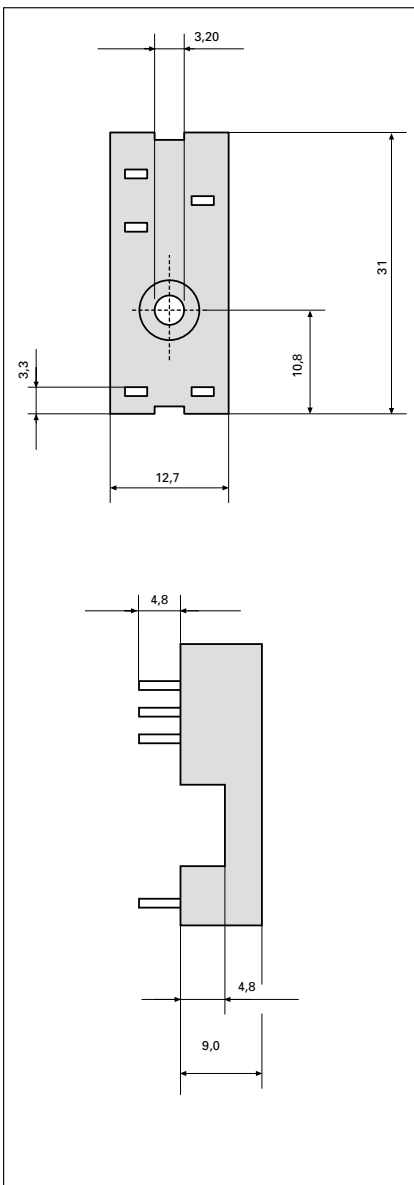
Accessories

ZVR 003
Retaining clip

Type of sockets

	ZVR 004	ZVR 005	ZGR 003
Fits to relay	SGR 431, 411	SGR 451	SGR 441
Pin layout	5,0 mm	3,2 mm	3,5 mm

Dimensions drawing (mm)



General data

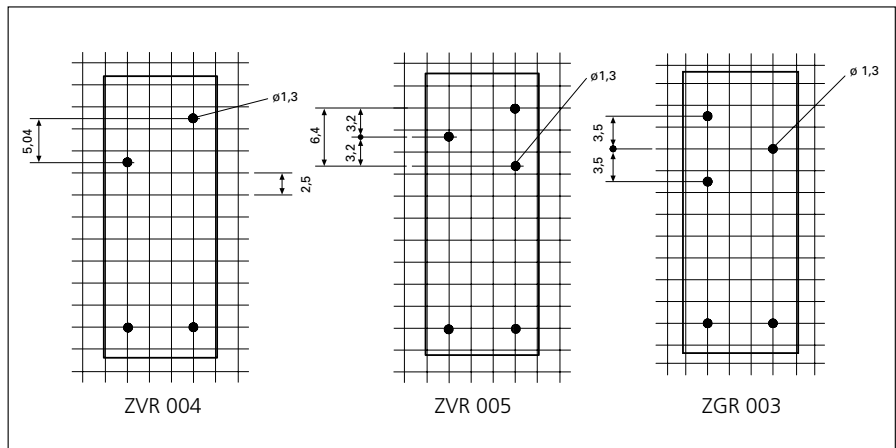
Nominal data	300 VAC 12 A
Test voltage	> 5.000 V _{eff}
Contact springs material	CuSn6 tin plated
Mounting	solder pin
Creeping resistance	CTI 250
Weight	approx. 7 g
Mounting position	any
Ambient temperature	-40°C - +85°C
No. of pins	ZVR 004 4pin ZVR 005 5pin ZGR 003 5pin
Protection category	IP 30

Tests, regulations

Approvals	UL, CSA
Insulation group	VDE 0110 / group C 250 VAC

Drilling patterns (mm)

View from solder side



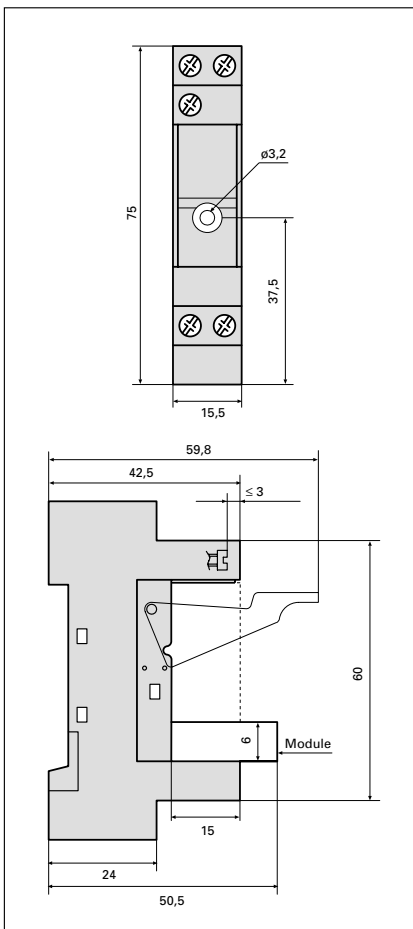


SGR xx1 – sockets with screw terminals and accessories

Accessories

- ZVR 006
- Retaining clip
- ZGE 011
- Label plate
- ZAE 011 - ZAE ...
- Modules (see next page)

Dimensions drawing (mm)



Type of socket

ZGE 006

Fits to relay

SGR 441

Pin layout

3,5 mm

General data

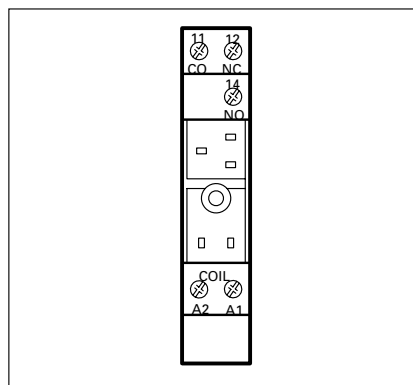
Nominal data	300 VAC 12 A
Test voltage	> 3.000 V _{eff}
Contact springs material	CuZn33 tin plated
Nominal torque on screws	0,8 Nm
Max. torque on screws	0,8 Nm
Terminals	combi screw M3 + Philips Gr.1
Max. wire section	2 x 2,5 mm ² compact wire 2 x 1,5 mm ² with cable end
Mounting	DIN rail 35 mm, EN 50022, central screw 1 x M3
Creeping resistance	CTI 250
Weight	approx. 39 g
Mounting position	any
Ambient temperature	-25°C - +85°C
No. of pins	ZGE 006 5pin
Terminals numbering	DIN EN 50011
Protection category	IP 20

Tests, regulations

Approvals	UL, CSA
Insulation group	VDE 0110 / group C 250 VAC

Diagram

View from above



Using DC modules + must be connected to A1!