

This day/night detecting sensor that automatically turns on an attached light fixture when the level of daylight drops. This photocell can detect ambient lighting and tell whether it is night or day outside. The sensor is also equipped with a test shield, allowing operators to override the sensor.

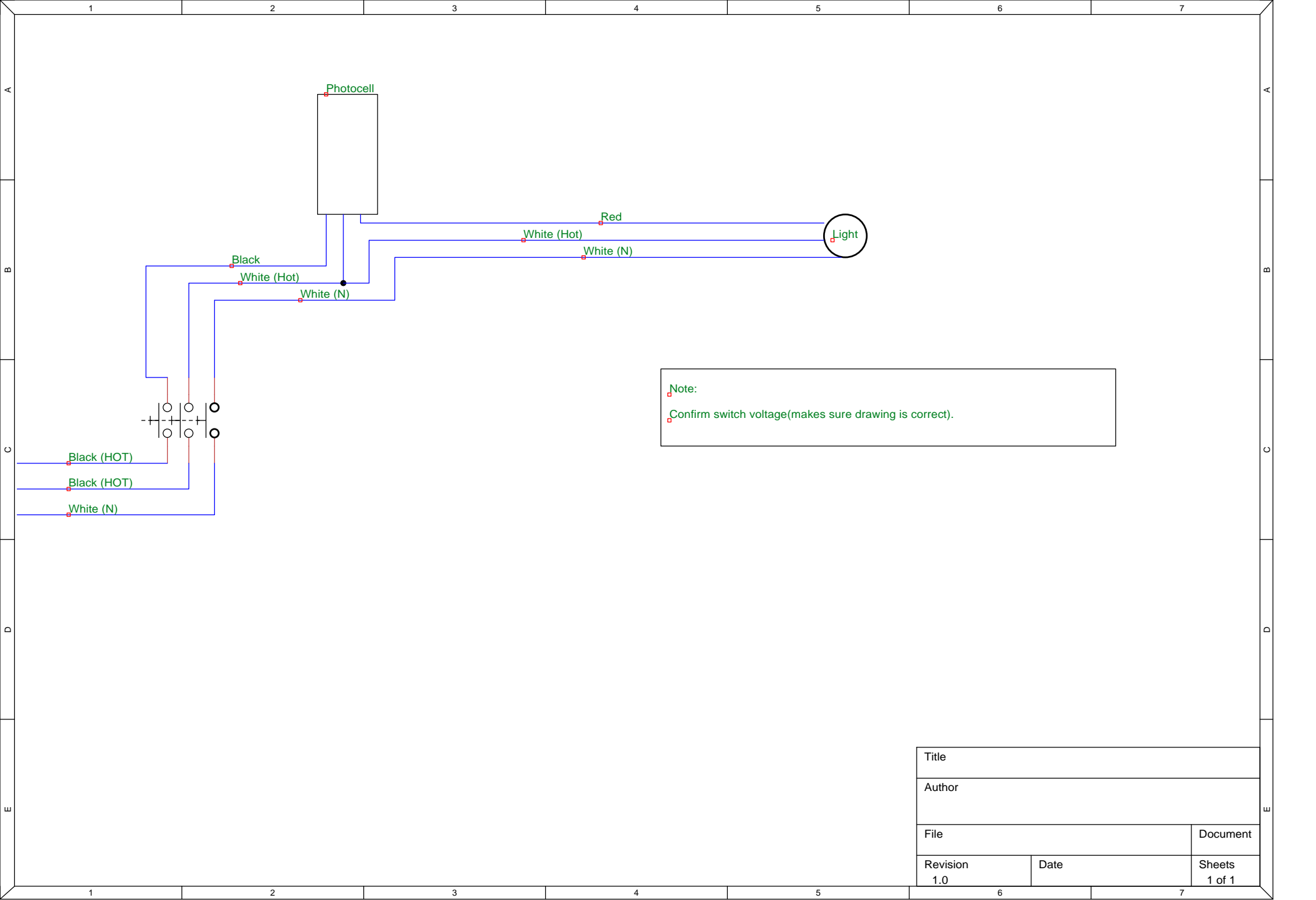
À
À
À
À
/
/
/
/
/
/
/
/
/
/
/
À

**Specifications:****Power Source:** 208-277V AC**Rated Load:** 1000 Watts**Working Temperature:** -40° F to 158° F**Housing:** Weatherproof Lexan**Photocell:** Silicon sensor**Ambient-Light:** 1 footcandle**Turn-on/off Ratio:** 1:1.5 **Time Delay:** 5 seconds (off only)**Switch Type:** Single pole, single throw**Contact Position at Night:** Normally Closed**Lead Wire:** 6" Moisture proof, color coated**Mounting:** 1/2"-14 threaded (fits 1/2" knockouts), adjustable swivel arm**Dimensions:****Height:** 4-18"**Width:** 2.4"**Depth:** 4"

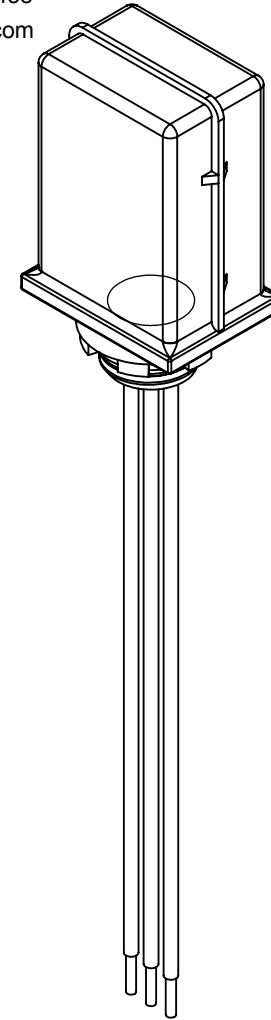
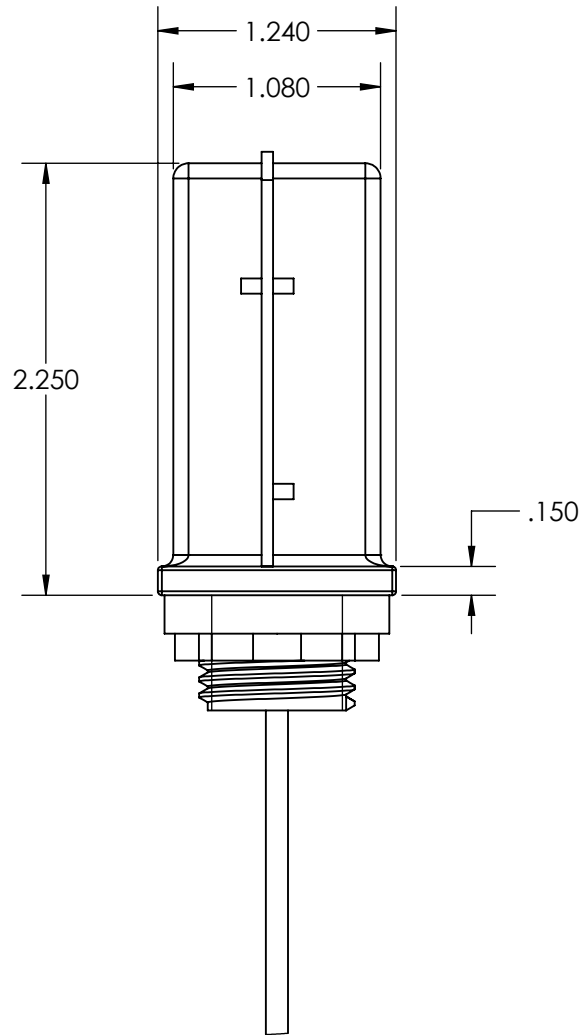
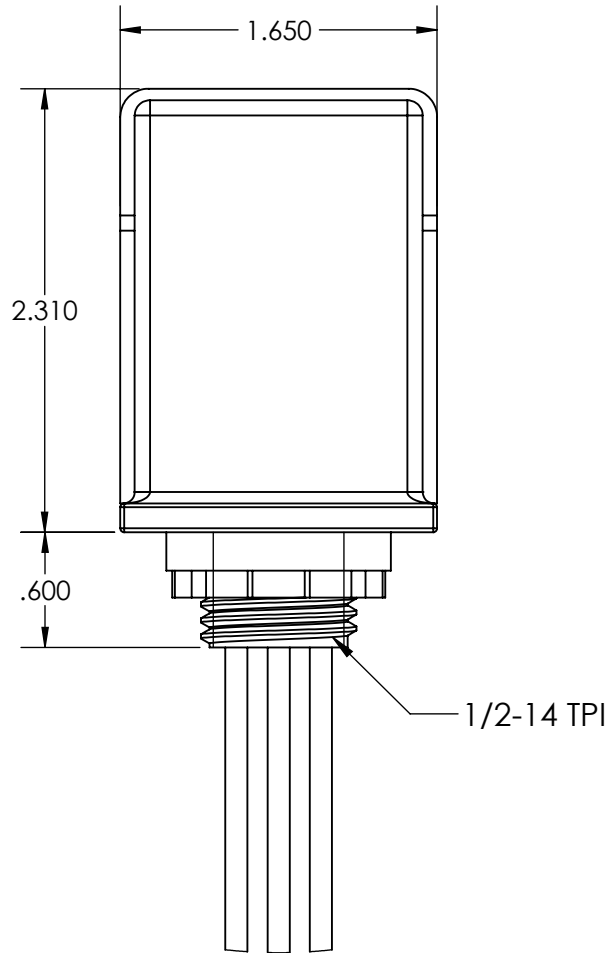
Part #: R0Y-208.277-5A (€ GJF)



Links (Click on the below items to view):



Title		
Author		
File		Document
Revision 1.0	Date	Sheets 1 of 1



PROPRIETARY AND CONFIDENTIAL
THE INFORMATION CONTAINED IN THIS DRAWING IS THE SOLE PROPERTY OF JAXXEN INCORPORATED. ANY REPRODUCTION IN PART OR AS A WHOLE WITHOUT THE WRITTEN PERMISSION OF JAXXEN INCORPORATED IS EXPRESSLY FORBIDDEN.

PART NUMBER:
JAXX-208-277-5A

SIZE		REV
A		

DIMENSIONS ARE IN INCHES		DATE	7/8/2020	SCALE: NTS	SHEET 1 OF 1
DO NOT SCALE DRAWING					

Installation and Setup Instructions

⚠ WARNING: Risk of Fire or Electric Shock

- Disconnect power at the circuit breaker(s) or disconnect switch(es) before beginning installation or servicing.
- Do NOT use the OFF state of the photocontrol for equipment servicing.

NOTICE

- DO NOT MOUNT WITH THE WIRES FACING UP.

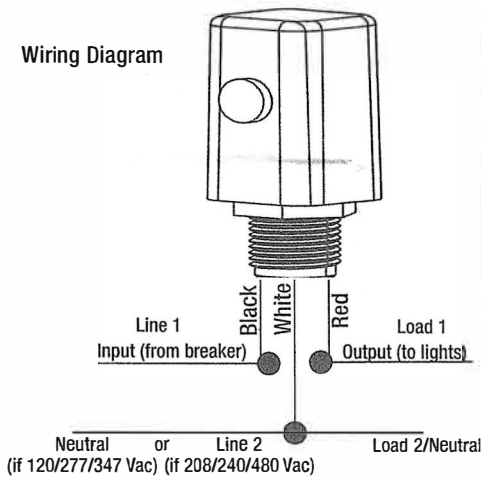
Ratings: (Not LED Compatible)

Input Voltage	120 V Photocontrols	120-277 V Photocontrols	208-277 V Photocontrols	347 V Photocontrols	480 V Photocontrols
Load Ratings	Tungsten: 15 A, 1800 W Ballast: 8.3 A, 1000 VA	Tungsten: 15 A, 1800-4150 W Ballast: 8.3 A, 1000-2300 VA	Tungsten: 15 A, 3100-4150 W Ballast: 8.3 A, 1700-2300 VA	Tungsten: 15 A, 5205 W Ballast: 8.3 A, 2880 VA	Tungsten: 15 A, 7200 W Ballast: 8.3 A, 4000 VA

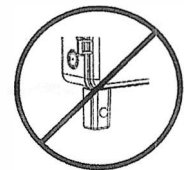
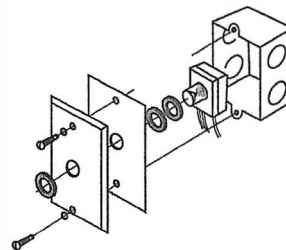
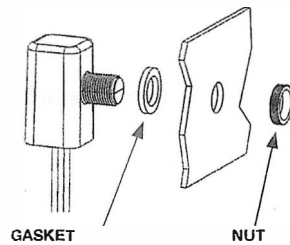
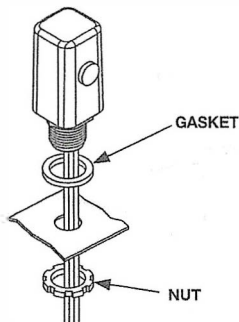
Installation:

1. Make sure to turn the power off at the breaker before installation.
2. Mount with an approved outdoor junction box or fixture using the included gasket and nut. (See photo)
DO NOT MOUNT WITH THE WIRES FACING UP OR ON THE BOTTOM OF AN ENCLOSURE.
4. Orient the lens of the photocontrol so it faces NORTH and away from artificial light sources that may cause the load to turn off at night.
5. See diagram below for wiring.
6. When all wiring is complete, you can turn the breaker back on to restore power to the photocontrol.
7. Test the unit by covering the lens of the photocontrol with a leather glove or similar. The photocontrol should react to a change within 60 seconds.

Wiring Diagram



Photocell Wires	120/277/347 V Description	Photocell Wires	208/240/480 V Description
Black	Connect Line 1 (hot) wire from the breaker panel	Black	Connect Line 1 (1st hot) wire from breaker panel
White	Connect Neutral from breaker panel (you can connect the neutral for the lights or contactor you are controlling here too)	White	Connect Line 2 (2nd hot) wire from breaker panel. Here you can also connect the Load 2 wire for the lights or contactor you are controlling. (The other load wire connects to the RED wire *see below)
Red	Connect Load 1 wire (switched hot to lights or contactor) here	Red	*Connect Load 1 wire for the load (switched hot to lights or contactor) here



Included Accessories:

- Metal Light Shield Qty 1 - Stem Mount and Stem & Swivel Mount Models

PRO TIP: Use when there is a high amount of incident light on the photocontrol from artificial light sources that may interfere with proper operation of photocontrol.

