



# WANJIA

ISO9001:2000 and ISO14001 Certified  
Relays for Advanced Technology

## MAGNETIC LATCHING RELAY

## WJ315-RELAYS



### SPECIFICATIONS

#### Contact

Contact arrangement	1C,2C
Contact Material	silver alloy
Contact Resistance	MAX 15mΩ
6V 1A	
Rated Load	1C, 16A 250VAC
	2C, 5A 250VAC
MAX switching voltage	250VAC
MAX switching power	25000VA
Service Life(min)	
Mechanical (MAX. 180cpm)	1×10 <sup>6</sup>
Electrical (MAX. 20cpm)	5×10 <sup>4</sup>
	16/5A

#### Characteristics

Operate Time (ms)	≤30
Release Time	≤30
Initial Breakdown Voltage Between Coil & Contacts	3000VAC (50/60Hz) 1minute
Between Open Contact	1000VAC (50/60Hz)
Insulation Resistance	≥1000MΩ (500 VDC)
Ambient Temp.	-30°C to +55°C
Relative Humidity	40~90% RH
Shock Resistance	Functional ≥10G Destruction ≤100G
Vibration Resistance	Functional 10 to 55Hz Double Amplitude 1.5mm Destruction 10 to 55Hz Double Amplitude 1.5mm
Weight	Approx. 20g

#### Coil Data

Coil power	Single 2.4W Double 5W
Coil voltage	5-48V DC
Coil resistance:	See Below

#### Coil Data(Ambient Temp: 20°C)

Rated voltage (VDC)	Coil resistance (Ω)±10%	Coil Resistance (Double)	Operate Voltage (VDC)	Release Voltage (VDC)	Overload Voltage (VDC)
		(Ω) ±10%			
5	31	16/16	≤75%	≤75%	≤120%
6	45	23/23			
9	101	51/51			
12	180	90/90			
24	720	360/360			
48	2880	1440/1440			

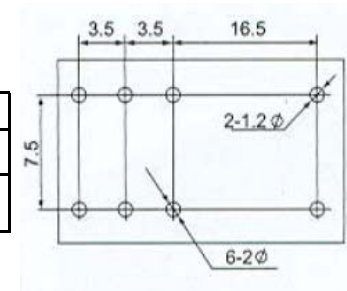
### ORDERING INFORMATION

WJ315 - D 2C 12VDC

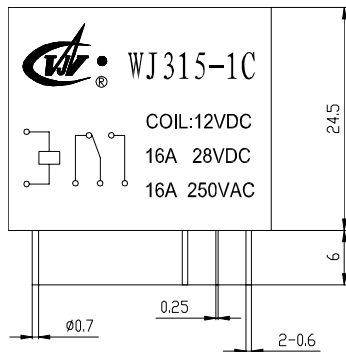
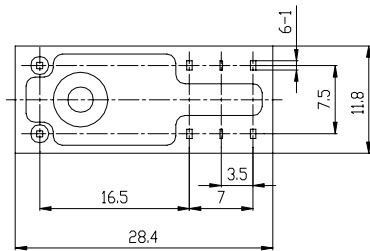
①      ②      ③      ④

① Type	② Db1/Sgl Coil	③ Contact Arrngmt	④ Coil Voltage (DC)
WJ315	D or S	1C or 2C	5, 6, 9, 12,
			18, 24, 48V

### PINNING PATTERN mm

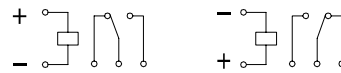


**dimension (unit: mm)**

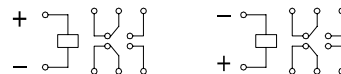


Wiring diagram

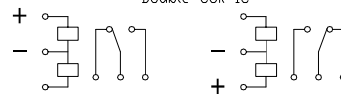
Single Coil 1C



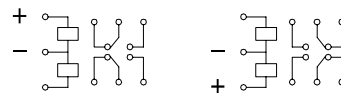
Single Coil 2C



Double Coil 1C



Double Coil 2C



**Quality policy:**

Today's quality is our future market;  
Vendors'satisfaction is our pursuing goal.

**Environment policy:**

Keeping the system,Abiding by laws;  
Innovation in technology,Precaution in pollutions;  
Propaganda & education,Continual improvement.