



- Low coil power consumption.
- High contact load.
- Strong anti-shock high reliability.

## SPECIFICATIONS

### Contact

Arrangement	2A、2B、2C
Contact Material	Silver alloy
Contact Resistance (By voltage drop 6V 1A)	Max.50mΩ
Rating	
Resistive load	30A 277VAC
Max. Switching Power	850W 8500VA
Expected life(min.ope)	
Mechanical(at 120 cpm)	$5 \times 10^6$
Electrical (at 20 cpm)	$2 \times 10^4$

### Characteristics

Operate Time	Max.30msec.	
Release Time	Max.30msec.	
Operating humidity	40to 90% RH	
Initial breakdown voltage		
Between coil & contact	20200VAC (50/60Hz)for 1 min.	
Between open contacts	2500VAC (50/60Hz)for 1 min.	
Insulation Resistance	Min. 1000MΩ (500 VDC)	
Ambient temperature	-40℃ ~ +55℃	
Shock Resistance	Functional	Min.10G
	Destruction	Min. 100G
Vibration Resistance	Functional	10 to 55 Hz at double Amplitude of 1.5mm
	Destruction	10 to 55 Hz at double Amplitude of 1.5mm
Unit weight	≤220g	

### Coil

Nominal operating power	2.0W to 10.0VA
-------------------------	----------------

## TYPICAL APPLICATION

- 1.Industrial machine
- 2.Electrical equipment
- 3.Houseold applications



350 Milford Point Rd. Milford, CT 06460 P.203-878-0400 F.203-878-0458  
 www.jaxxeninc.com info@jaxxeninc.com

## ORDERING INFORMATION

**WJ184 - 2 C - 12VDC 75Ω**

① ② ③ ④ ⑤

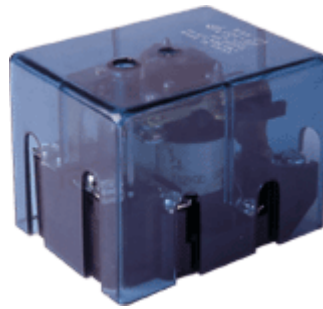
①Type	②Number of pole	③Contact form	④Coilvoltage (DC)	⑤Coil resistance
WJ184	2:2pole	A: 1 form A	12, 24V	75, 290 : 2.0W
		B: 1 form B		
		C: 1 form C	220VAC	1500 : 10.0VA

# COIL DATA (at 20<sup>0</sup>C)

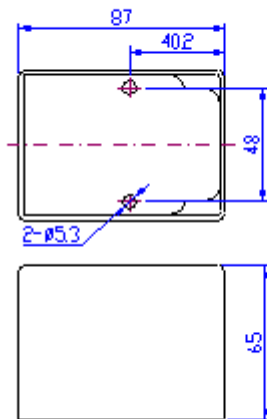
Nominal Voltage (VDC)	Coil Resistance (Ω)±10%	Power Consumption (W)	Pull-in Voltage (VDC)	Drop-out Voltage (VDC)	Max.Allowable Voltage (VDC)
12	75	2.0	79%Max.	10%Min.	120% of nominal Voltage
24	290				
220VAC	1500	10.0VA	84%Max.	30%Min.	

## DIMENSIONS

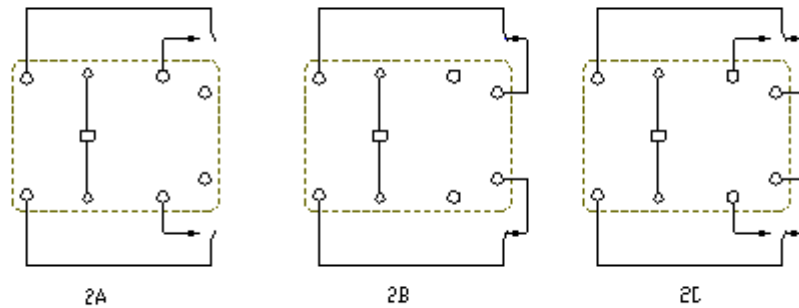
Unit: mm



Dimensions and Mounting



Wiring diagram



Note: The relative changes for the specification will not be advised in the future.