

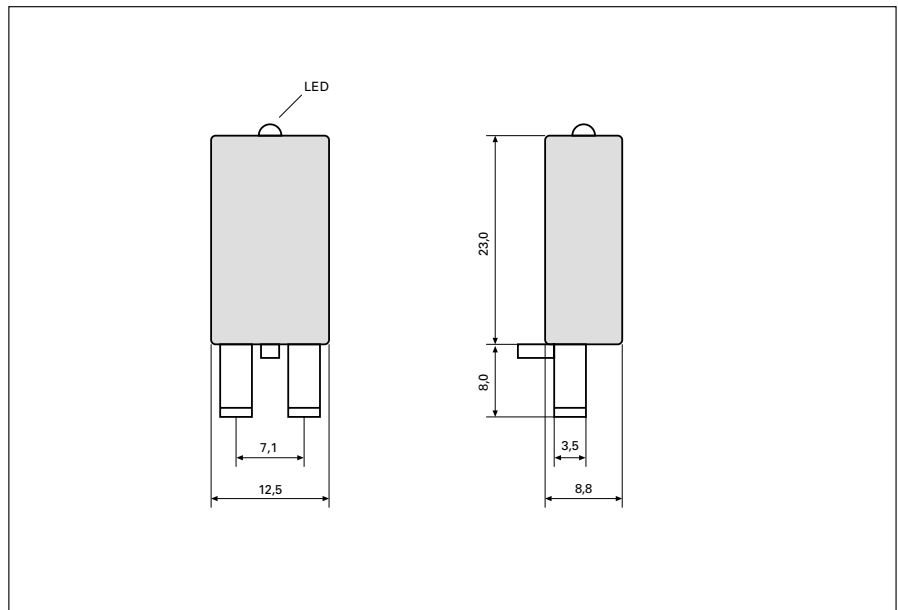
Modules for sockets with screw terminals

About the colour of the LED's:

According to EN 60073 the colour RED is used to indicate an alert or a dangerous situation.

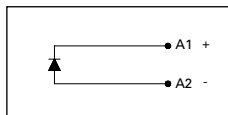
GREEN shows normal condition or a save situation. Therefore our modules with an LED indicator are available in red or green.

Dimensions drawing (mm)



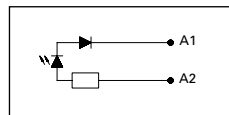
Diagrams (mm)

ZAE 011



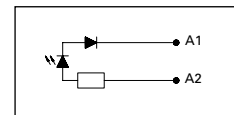
Diode 6-230 VDC

ZAE 023 (LED red) / 223 (LED green)



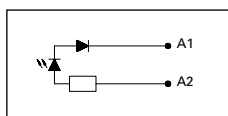
LED 6-24 VDC

ZAE 024 (LED red) / 224 (LED green)



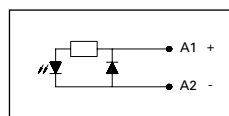
LED 24-60 VDC

ZAE 019 (LED red) / 219 (LED green)



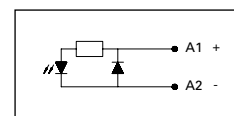
LED 110-230 VDC

ZAE 012 (LED red) / 212 (LED green)



LED + Chopper diode 6-24 VDC

ZAE 020 (LED red) / 220 (LED green)



LED + Chopper diode 24-60 VDC