

# VR SERIES

## AUTOMOTIVE RELAY SOCKETS

### DESCRIPTION

5 Pin Automotive Micro Relay Sockets

### CONSTRUCTION

- Contacts** • Brass, Bright Tin Plated
- Molding** • Heat Stabilized Thermoplastic, 130° C Continuous use Temperature Rating

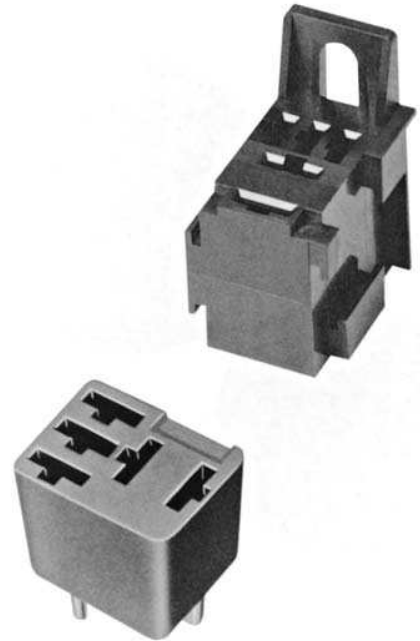
### ORDERING CODE

| PART NO.   | DESCRIPTION               | TERMINAL TYPE     |
|------------|---------------------------|-------------------|
| VR04-PCB-0 | 4 Pin Automotive (Fig. 1) | PC Board          |
| VR05-PCB   | 5 Pin Automotive (Fig. 2) | PC Board          |
| VR05-SPCB  | 5 Pin Automotive (Fig. 2) | PC Board          |
| VR05-LFW   | 5 Pin Automotive (Fig. 3) | Crimp (see chart) |
| VR05-FW    | 5 Pin Automotive (Fig. 4) | Crimp (see chart) |

### TERMINAL COMPATIBILITY CHART

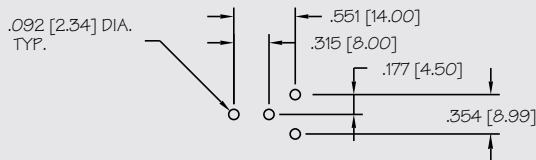
Custom Connector Corporation recommends the following terminals to be used in conjunction with our VR Series relay socket series. All Parts listed below need to be purchased separately.

| ORDER FROM       | PART NO.  | AWG   | BLADE |
|------------------|-----------|-------|-------|
| FCI Automotive   | JW-1230-2 | 12-14 | 1/4"  |
| FCI Automotive   | JW-1630-2 | 16-18 | 1/4"  |
| AMP              | 42100     | 14-18 | 1/4"  |
| AMP              | 42281     | 14-18 | 1/4"  |
| AMP              | 42904     | 12-16 | 1/4"  |
| AMP              | 60249     | 12-16 | 1/4"  |
| Grote & Hartmann | 26313     | 18    | 3/16" |



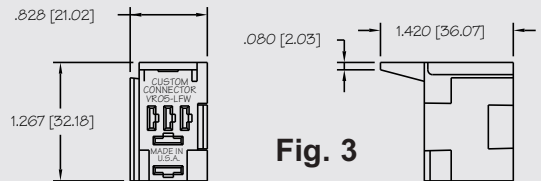
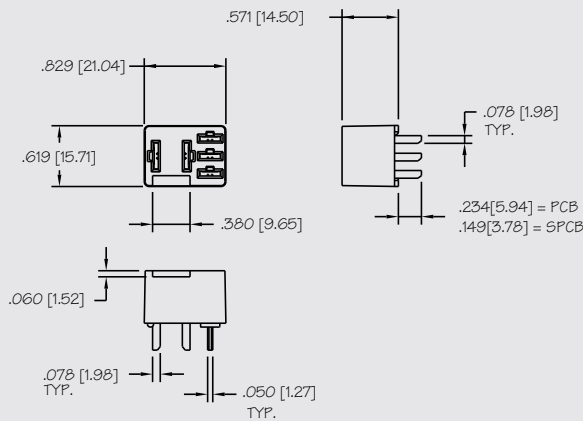
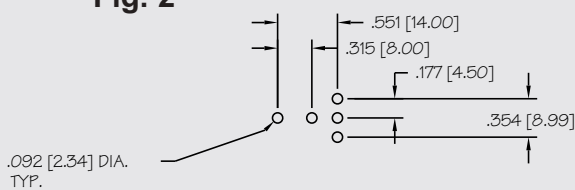
**Fig. 1**

PC BOARD LAYOUT

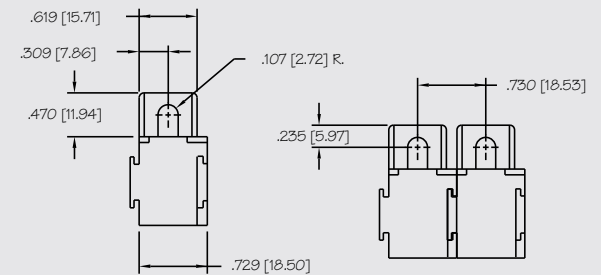


**Fig. 2**

PC BOARD LAYOUT



**Fig. 3**



**Fig. 4**

