

RB SERIES

RELAY SOCKETS



CUSTOM CONNECTOR

DESCRIPTION

8 and 11 Pin Octal Sockets

ELECTRICAL RATING

- RB08, RB08-PC - 600 Volts, 10 Amps
- RB11, RB11-PC - 300 Volts, 10 Amps

CONSTRUCTION

- Contacts** • Brass, Nickel Plated
- Screws** • 6 - 32 x 5/16" Steel, Zinc Plated; Pressure Clamp Wire Range #12-#22 Solid or Stranded
- Molding** • Break Resistant Thermoplastic

AGENCY APPROVALS

- UL recognized, File No. E60008
- CSA certified, File No. LR29513



ORDERING CODE

PART NO.	DESCRIPTION	TERMINAL TYPE
RB08	DPDT, 8 Pin Octal (Fig. 1)	Binder Head Screws
RB08-PC	DPDT, 8 Pin Octal (Fig. 1)	Pressure Clamp Screws
RB11	3PDT, 11 Pin Octal Style (Fig. 2)	Binder Head Screws
RB11-PC	3PDT, 11 Pin Octal Style (Fig. 2)	Pressure Clamp Screws

Fig. 1

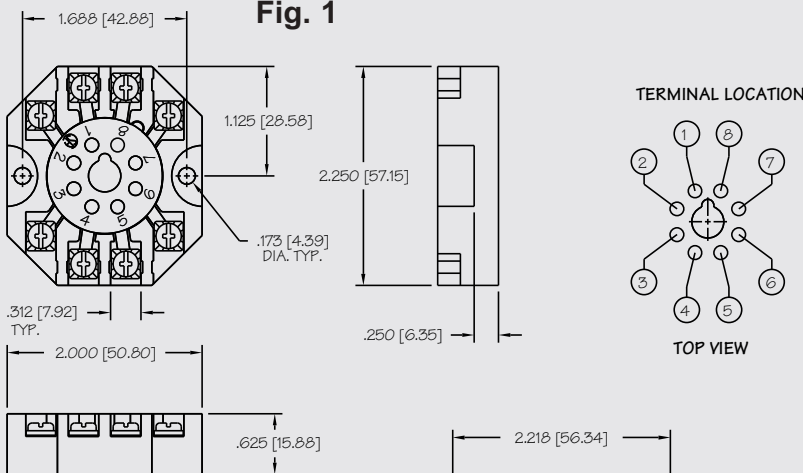


Fig. 2

