

DESCRIPTION 8 Pin Midget Sockets, DIN Rail Mountable

ELECTRICAL RATING

- 300 Volts, 10 Amps
- 150 Volts, 15 Amps

CONSTRUCTION

Contacts • Brass, Nickel Plated

Screws • Binder Head, 6 - 32 x 1/4" Steel, Zinc Plated

• Pressure Clamp, 6- 32 x 5/16" Steel, Zinc Plated, Wire Range #12 - #22 Solid or Stranded

Molding • Break Resistant Thermoplastic Black Standard, Grey Available

AGENCY APPROVALS

- UL recognized, File No. E60008
- CSA certified, File No. LR29513
- CE



ORDERING CODE

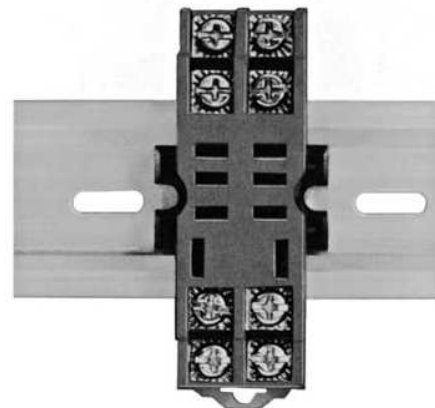
PART NO.	DESCRIPTION	TERMINAL TYPE
GT05	SPDT, 5 Pin Midget	Binder Head Screws
GT05-PC	SPDT, 5 Pin Midget	Pressure Clamp Screws
GT08	DPDT, 8 Pin Midget	Binder Head Screw
GT08-PC	DPDT, 8 Pin Midget	Pressure Clamp Screws

ACCESSORIES

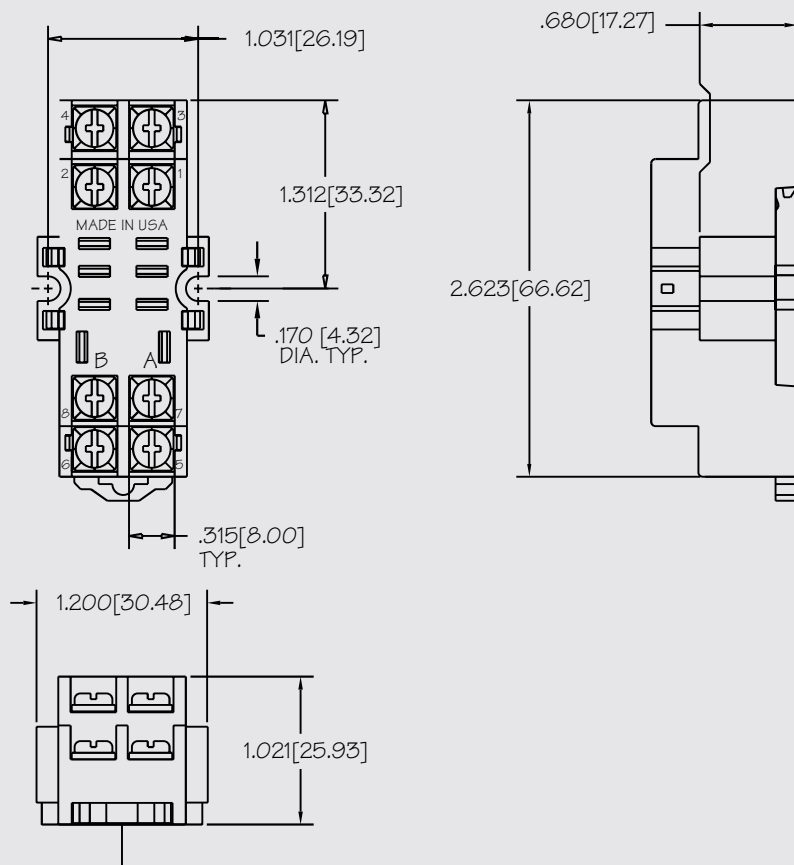
PART NO.	DESCRIPTION (Refer to the accessories pages 25-27)
C-103-PM	Prepunched Aluminum DIN Rail (1 Meter Lengths)
C-104-PM	Prepunched Steel DIN Rail (1 Meter Lengths)
C-105-PM	Prepunched Steel DIN Rail (1 Meter Lengths)
C-106-2PM	Prepunched Steel DIN Rail (2 Meter Lengths)
C-108-PM	Prepunched Raised Aluminum DIN Rail (1 Meter Lengths)
C-108-2PM	Prepunched Raised Aluminum DIN Rail (2 Meter Lengths)
HDB-4	Hold Down Spring

GT SERIES

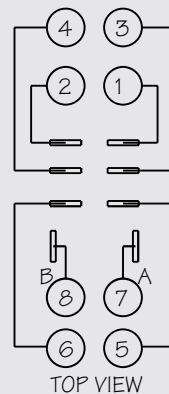
RELAY SOCKETS



CUSTOM CONNECTOR



TERMINAL LOCATION



GT SERIES NOTE:

Terminals 1,4 and 5 omitted on SPDT, 5 Pin models