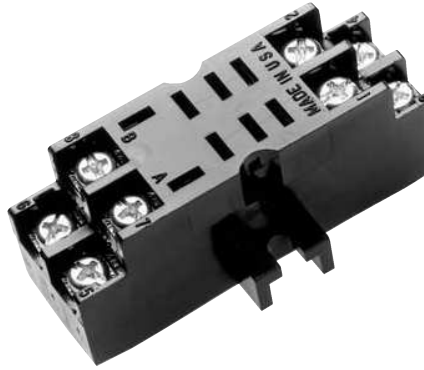


# GR SERIES

## RELAY SOCKETS



|                          |  |
|--------------------------|--|
| <b>DESCRIPTION</b>       | 8 Pin Midget Sockets   |
| <b>ELECTRICAL RATING</b> | <ul style="list-style-type: none"> <li>• 300 Volts, 10 Amps</li> <li>• 150 Volts, 15 Amps</li> </ul> |

|                     |   |
|---------------------|---|
| <b>CONSTRUCTION</b> | <p><b>Contacts</b> • Brass, Nickel Plated</p> <p><b>Screws</b> • Binder Head, 6 - 32 x 1/4" Steel, Zinc Plated</p> <p>• Pressure Clamp, 6- 32 x 5/16" Steel, Zinc Plated, Wire Range #12 - #22 Solid or Stranded</p> <p><b>Molding</b> • Break Resistant Thermoplastic Black Standard, Grey Available</p> |
|---------------------|---|

|                         |   |
|-------------------------|---|
| <b>AGENCY APPROVALS</b> | <ul style="list-style-type: none"> <li>• UL recognized, File No. E60008</li> <li>• CSA certified, File No. LR29513</li> <li>• CE</li> </ul> |
|-------------------------|---|



|                      |                    |                       |
|----------------------|--------------------|-----------------------|
| <b>ORDERING CODE</b> |                    |                       |
| <b>PART NO.</b>      | <b>DESCRIPTION</b> | <b>TERMINAL TYPE</b>  |
| GR108                | DPDT, 8 Pin Midget | Binder Head Screws    |
| GR108-PC             | DPDT, 8 Pin Midget | Pressure Clamp Screws |

|                    |  |
|--------------------|--|
| <b>ACCESSORIES</b> |  |
| <b>PART NO.</b>    | <b>DESCRIPTION (Refer to the accessories pages 25-27))</b> |
| HDB-4              | Hold Down Spring   |



CUSTOM CONNECTOR

