




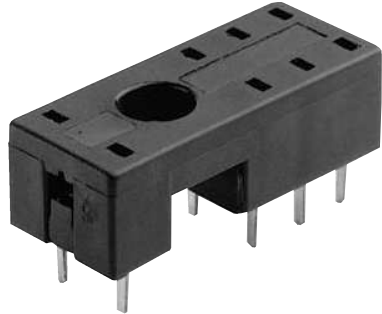


<b>DESCRIPTION</b>	5 and 8 Pin Slim Line Sockets	
<b>ELECTRICAL RATING</b>	• 300 Volts, 10 Amps  : 300 Volts, 12 Amps 	
<b>CONSTRUCTION</b>	<b>Contacts</b>	• Copper Alloy, Tin Plated
	<b>Molding</b>	• Break Resistant Thermoplastic
<b>AGENCY APPROVALS</b>	• UL recognized, File No. E113714 	 
	• CSA certified, File No. 172852	
	• CE	

# EC SERIES

## RELAY SOCKETS

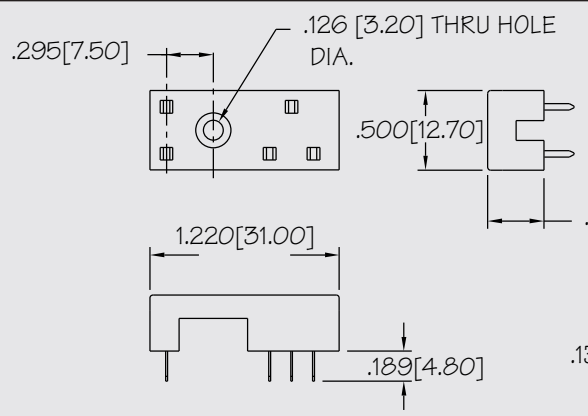


ORDERING CODE		
PART NO.	DESCRIPTION	TERMINAL TYPE
EC35	SPDT, 5 Pin Slim Line (Fig. 1)	PC Board
EC50	DPDT, 8 Pin Slim Line (Fig. 2)	PC Board

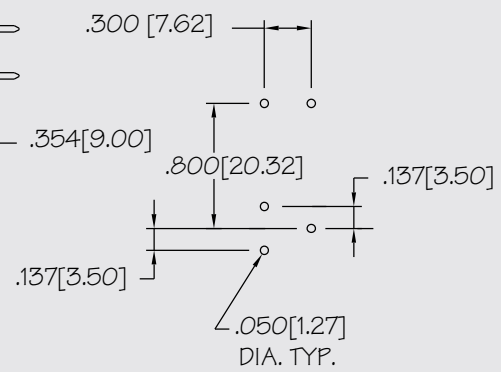
ACCESSORIES	
PART NO.	DESCRIPTION (Refer to the accessories pages 25-27)
MH12-2	Hold Down Spring Steel
MH16-2	Hold Down Spring Steel
MH25-2	Hold Down Spring Steel
MP12-2	Hold Down Spring Plastic
MP16-2	Hold Down Spring Plastic
MP25-2	Hold Down Spring Plastic



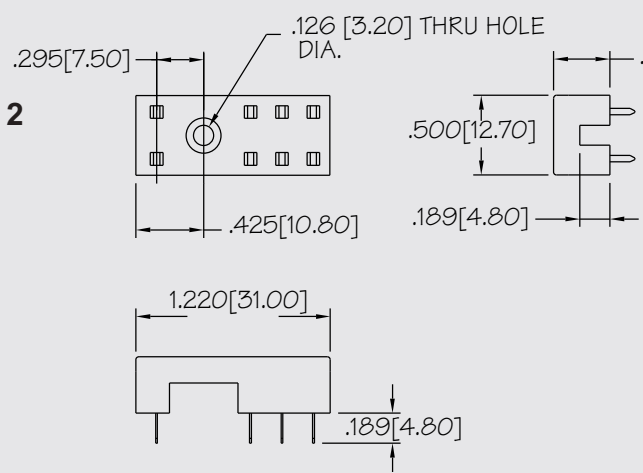
**Fig. 1**



**PC BOARD LAYOUT**



**Fig. 2**



**PC BOARD LAYOUT**

