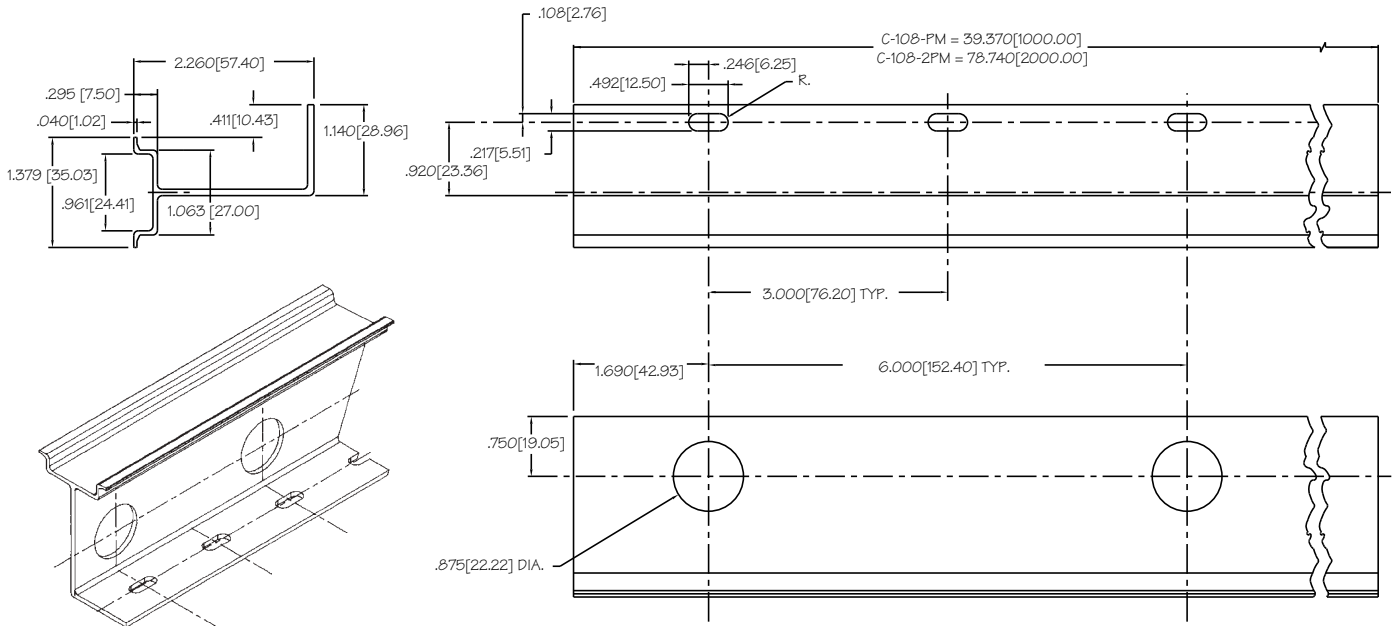


# RELAY SOCKET ACCESSORIES

## DRAWINGS & SPECIFICATIONS

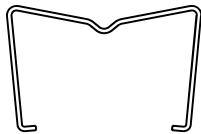
### C-108-PM, C-108-2PM DIN RAIL

### \*\*\*NEW RAISED DIN RAIL\*\*\*



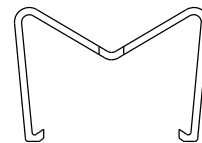
3-D VIEW

### EC SERIES - HOLD DOWN SPRINGS



STEEL SPRING

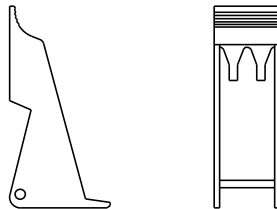
- MH12-2 - For relays with a height of 12mm
- MH16-2 - For relays with a height of 15 - 16.5mm
- MH25-2 - For relays with a height of 25 - 25.5mm



PLASTIC SPRING

- MP12-2 - For relays with a height of 12mm
- MP16-2 - For relays with a height of 15 - 16.5mm
- MP25-2 - For relays with a height of 25 - 25.5mm

### HOLD DOWN DEVICES /EJECTORS



FOR ES35, ES50, ES50/3:

- MS12 - For relays with a height of 12mm
- MS16 - For relays with a height of 15 - 16.5mm
- MS25 - For relays with a height of 25 - 25.5mm

FOR ES15/2N, ES15/3N, ES15/4N. ES15/4, ES15/4S, ES15/4G: MS35